

# State of Wyoming Corner Record

(In compliance with the **CORNER PERPETUATION AND FILING ACT**, Wyoming Statutes, 1977 Section 36-11-101, et. seq., and the Rules and Regulations of the Board of Professional Engineers and Professional Land Surveyors)

Reverse side of this form may be used if more space is needed.

Record of original survey and citation of source of historical information (if corner is lost or obliterated). Description of corner monumentation evidence found and/or monument and accessories established to perpetuate the location of this corner. Sketch of relative location of monument, accessories, and reference points with course and distance to adjacent corner(s) (if determined in this survey). Method and rationale for reestablishment of lost or obliterated corner.

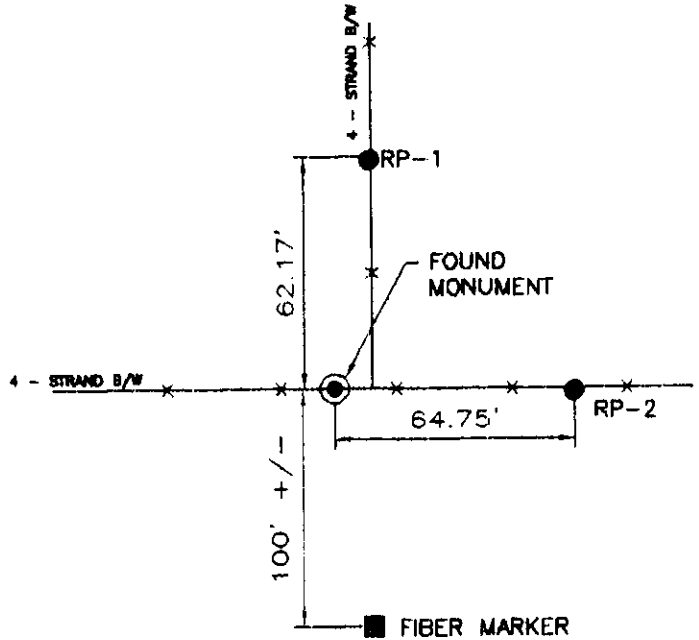
**FOUND:** 3" BRASS CAP ON IRON PIPE  
PROTRUDING 2" ABOVE THE GROUND.  
STAMPED APPROPRIATELY

**GLO RECORD:** SET AN IRON POST, 3 FT. LONG  
2 INS. DIAM., 27 INS. IN THE  
GROUND, WITH ORIGINAL STONE  
DEPOSITED ALONGSIDE, FOR COR.  
OF SECS. 5, 6, 7 AND 8, WITH  
BRASS CAP MARKD.

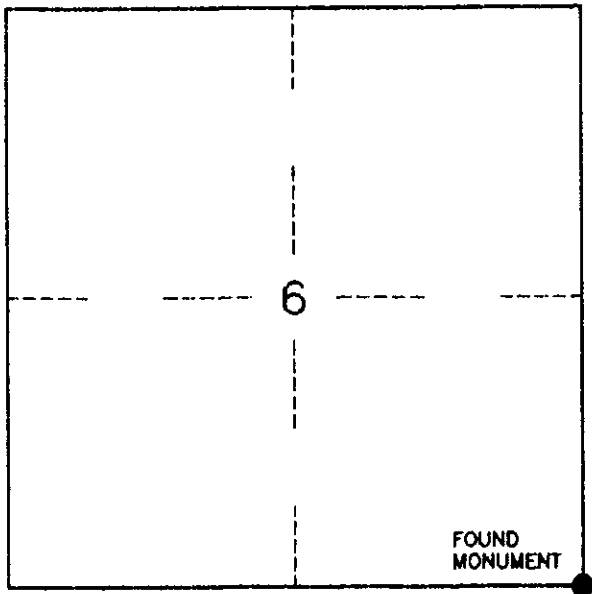
**SET:** NONE

**REFERENCES:** 2-PK NAIL W/ WASHER STAMPED  
RP-1, RP-2, PLS 566 IN  
FENCEPOSTS.

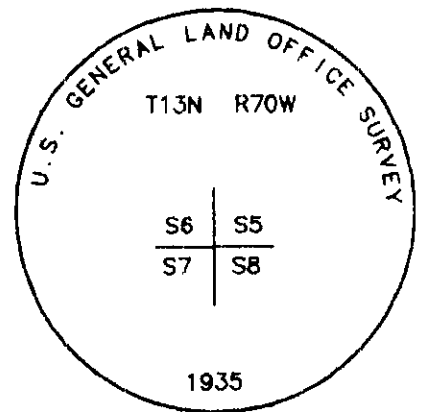
## Reference Locations



## Monument Location



## Monument Inscription



Date of Field Work: 10/99

Office Reference: 3108

## Cross Index Plat

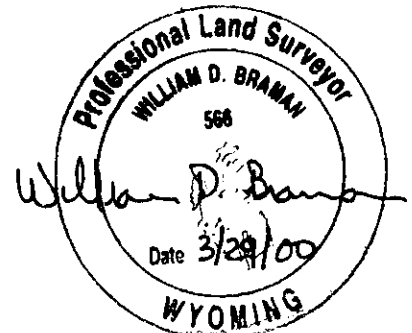
1	2	3	4	5	6	7	8	9	10	11	12	13	14	15	16	17	18	19	20	21	22	23	24	25	
A	+	+	+	+	+	+	+	+	+	+	+	+	+	+	+	+	+	+	+	+	+	+	+	+	A
B	+	+	+	+	+	+	+	+	+	+	+	+	+	+	+	+	+	+	+	+	+	+	+	+	B
C	+	6	+	5	+	4	+	3	+	2	+	1	+	C											C
D	+	+	+	+	+	+	+	+	+	+	+	+	+	D											D
E	+	+	+	+	+	+	+	+	+	+	+	+	+	E											E
F	+	+	+	+	+	+	+	+	+	+	+	+	+	F											F
G	+	7	+	8	+	9	+	10	+	11	+	12	+	G											G
H	+	+	+	+	+	+	+	+	+	+	+	+	+	H											H
J	+	+	+	+	+	+	+	+	+	+	+	+	+	J											J
K	+	+	+	+	+	+	+	+	+	+	+	+	+	K											K
L	+	18	+	17	+	16	+	15	+	14	+	13	+	L											L
M	+	+	+	+	+	+	+	+	+	+	+	+	+	M											M
N	+	+	+	+	+	+	+	+	+	+	+	+	+	N											N
O	+	+	+	+	+	+	+	+	+	+	+	+	+	O											O
P	+	19	+	20	+	21	+	22	+	23	+	24	+	P											P
Q	+	+	+	+	+	+	+	+	+	+	+	+	+	Q											Q
R	+	+	+	+	+	+	+	+	+	+	+	+	+	R											R
S	+	+	+	+	+	+	+	+	+	+	+	+	+	S											S
T	+	30	+	29	+	28	+	27	+	26	+	25	+	T											T
U	+	+	+	+	+	+	+	+	+	+	+	+	+	U											U
V	+	+	+	+	+	+	+	+	+	+	+	+	+	V											V
W	+	+	+	+	+	+	+	+	+	+	+	+	+	W											W
X	+	31	+	32	+	33	+	34	+	35	+	36	+	X											X
Y	+	+	+	+	+	+	+	+	+	+	+	+	+	Y											Y
Z	+	+	+	+	+	+	+	+	+	+	+	+	+	Z											Z
1	2	3	4	5	6	7	8	9	10	11	12	13	14	15	16	17	18	19	20	21	22	23	24	25	

Firm/Agency, Address

INTERMOUNTAIN  
PROFESSIONAL SERVICES  
5801 OSAGE AVENUE  
CHEYENNE, WYOMING 82009  
Ph: (307) 632-3138  
Fax: (307) 632-3194

This corner record was prepared by me or under my direction and supervision.

**SEAL & SIGNATURE**



RECORDED 3/31/2000 AT 10:01 AM REC# 271368 BK# 1550 PG# 608  
DEBRA K. LATHROP, CLERK OF LARAMIE COUNTY, WY PAGE 1 OF 1

Corner Name SECTION CORNER Section 6, T 13 N, R 70 W, 6th P.M.  
County: LARAMIE Wyoming

Cross-Index No.: E-5